

Important Numbers

EMERGENCIES

- Police/Fire 911
- MDEQ Pollution Alert System (PEAS) 800-292-4706; 24 hrs

NON-EMERGENCIES

Livingston County:

- Health Department 517-546-9858; 8 am - 5 pm
- Drain Office 517-546-0040; 8 am - 5 pm

Macomb County:

- Health Department 586-469-5236; 8 am - 5 pm
- IDEP Hotline 877-679-4337; after 5 pm
- IDEP e-mail IDEP@macombcountymi.gov

Oakland County 248-858-0931; 24 hrs

St. Clair County 877-504-SWIM (7946); 24 hrs

Washtenaw County 734-222-3880; 8 am - 5 pm

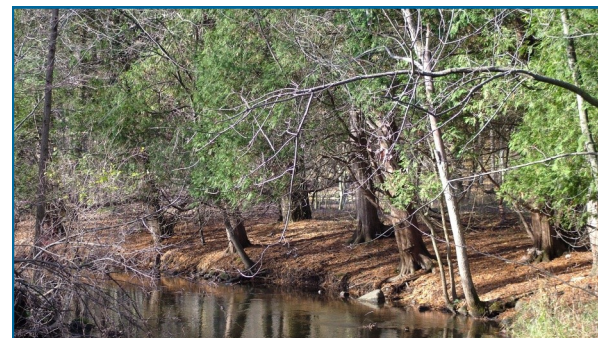
Wayne County 888-223-2363; 24 hrs

Laura Gruzowski, HRC 248-454-6856

Ron Fadoir, OCWRC 248-858-5248

How to Spot Illicit Discharges

A Tip Card for Municipal Staff



An illicit discharge is any discharge containing polluting material, such as sediment, nutrients, oil and bacteria. These discharges can drain to lakes and streams via storm drains. The communities in Southeast Michigan are required to prevent illicit discharges from entering storm water. You can do your part by notifying the appropriate agency when you spot a potential illicit discharge.

What to Report?

- Spills and contamination to lakes, rivers and streams
- Suspicious dumping to catch basins or waterways
- Unusual discharges from pipes
- Sewage on the ground or draining to surface water
- Large number of dead fish in waterways
- Failing or leaky septic systems
- Polluted runoff from storage piles or dumpsters to catch basins or waterways
- Sewage, detergent, chemical, petroleum or rotten egg odors
- Soil erosion from construction sites